



DESIGNING YOUR BACKYARD HABITAT

JUDITH PHILLIPS

READY, SET, GROW

JANUARY 2023



Your backyard is part of the larger neighborhood landscape. Assess what habitat is already available and fill in the gaps.

Start with the essentials:

- **Food** sources throughout the seasons—create a buffet for diverse insects/birds/animals at different life stages (larvae are nestling food!)
- **Shelter** layers of planting for roosting, nesting—from tree canopies to organic mulch and bare ground
- **Water** agua es vida



Planning and planting to support climate-stressed wildlife



Food





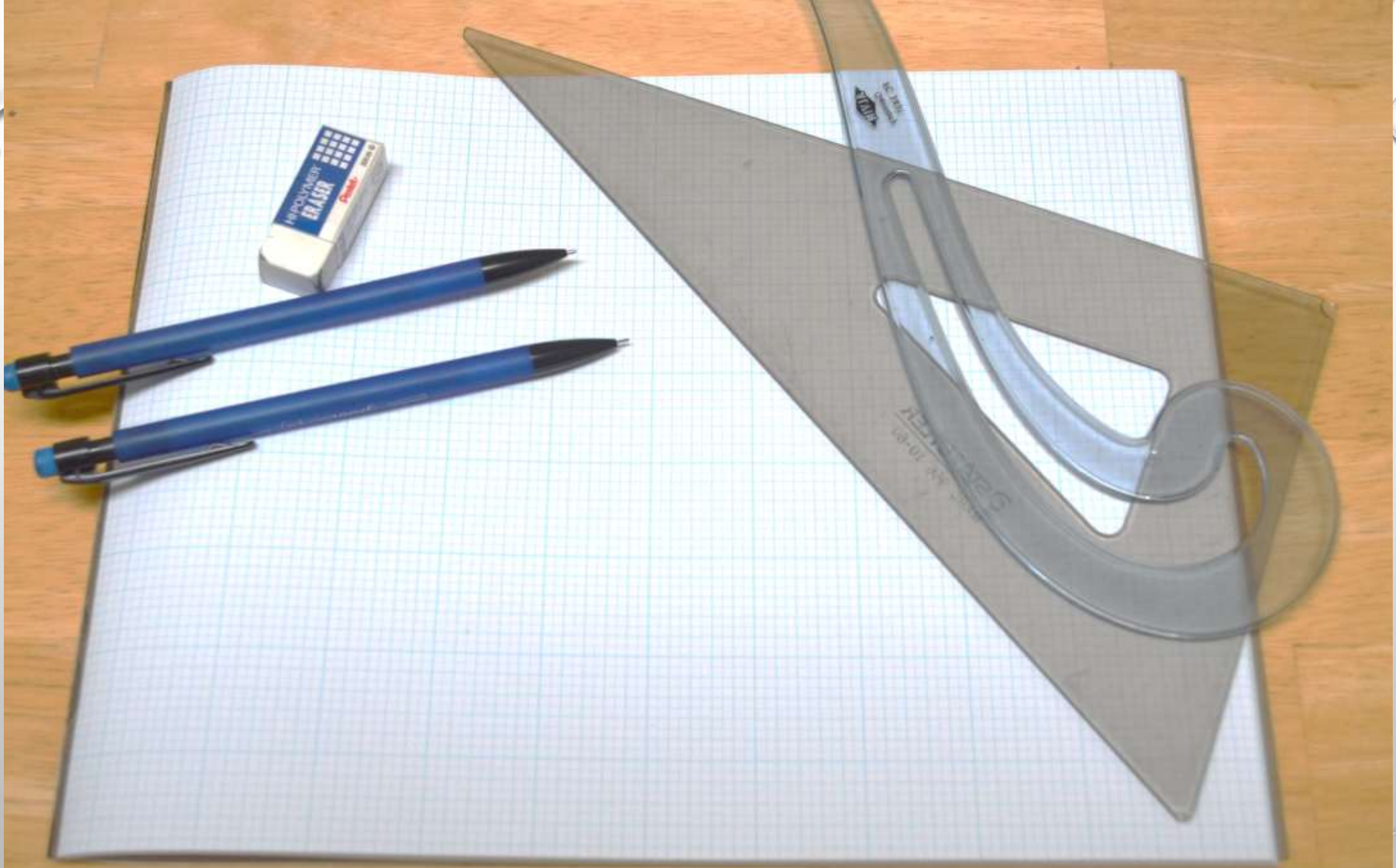
Shelter

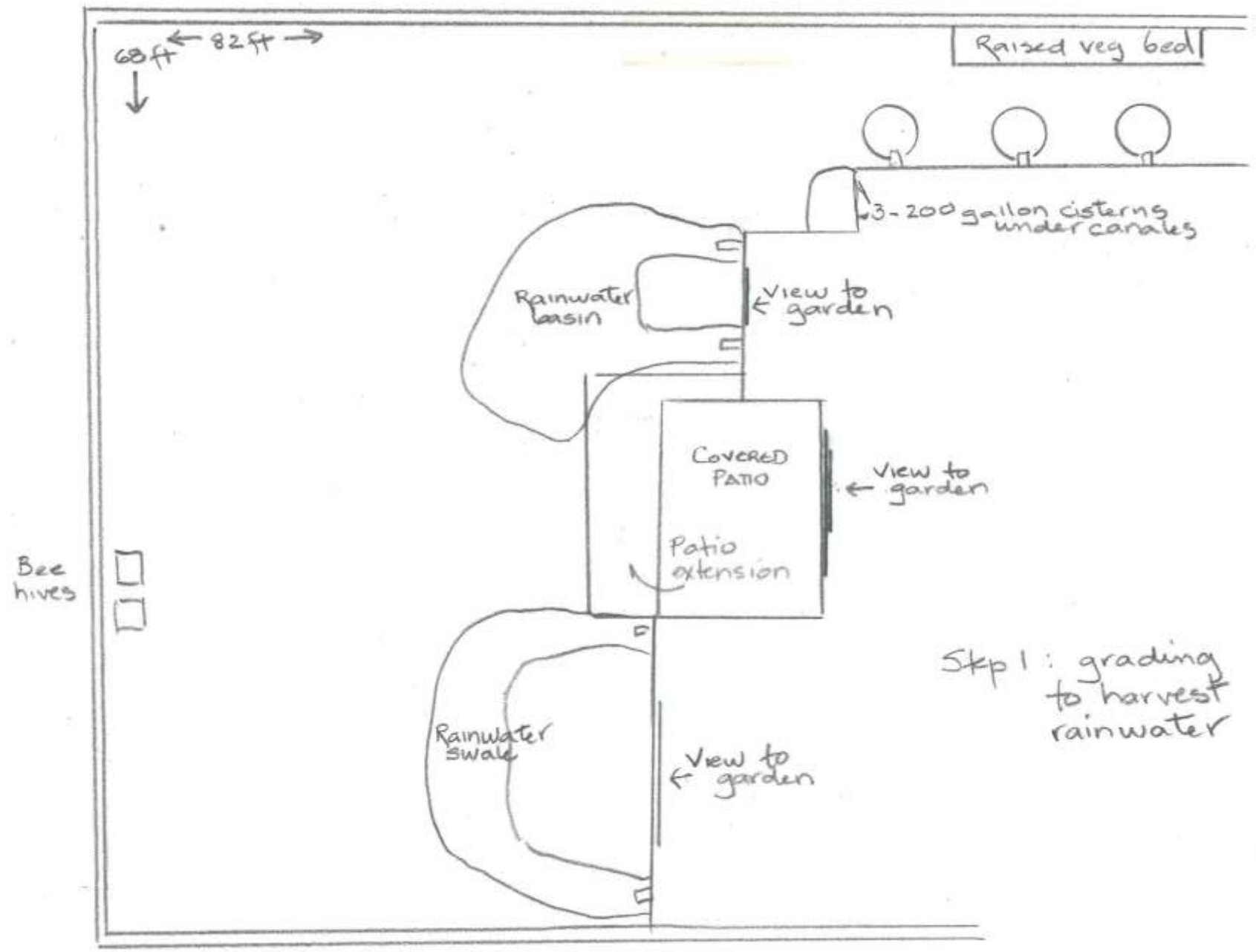




Water







Step 1: grading to harvest rainwater

1" = 10'0" NORTH

<https://aridlidcoalition.org/index.php/residential-rainwater-harvesting-training/>

<https://aridlidcoalition.org/index.php/residential-rainwater-harvesting-training/>





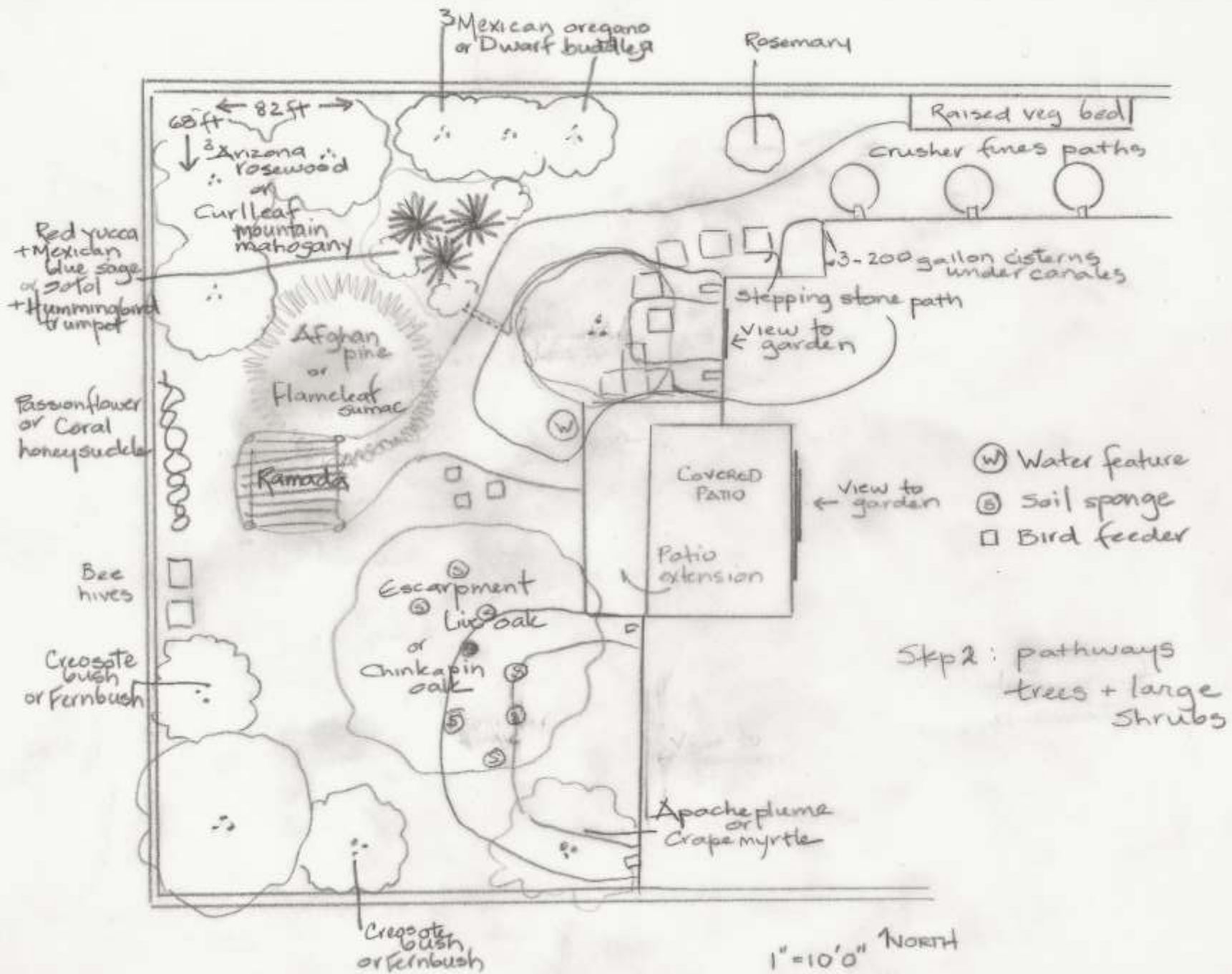
Organize space around rainwater harvesting opportunities for the largest plants

Pathways divide larger spaces into smaller planting areas.

Plotting plants at their mature sizes helps determine spacing









Place the largest plants on the plan first as they will determine the light available to adjacent plants and the water shared with them.

Balance layers of the canopy and denser thicket-like groupings with open space and low plant cover, including some open ground or crusher fines paths for ground-nesting insects.







Think about where you will
view the garden

- How you'll move through the space
- From where you might view the wildlife activity





Clustering and massing plants in groups is most effective for pollination and foraging efficiency



It also has the most visual appeal for human observers



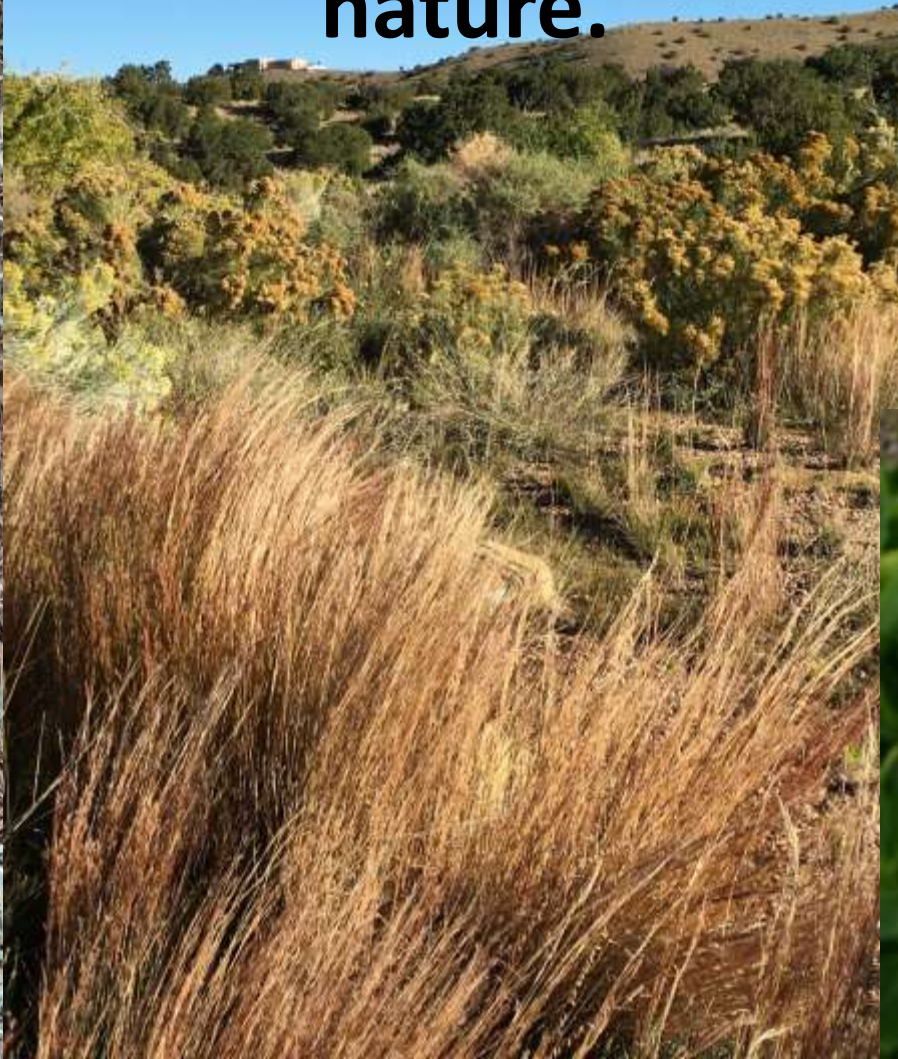
**Group smaller wildflowers and grasses
in clusters of 5 or 7 plants to assure you
have enough coverage to be a lure**

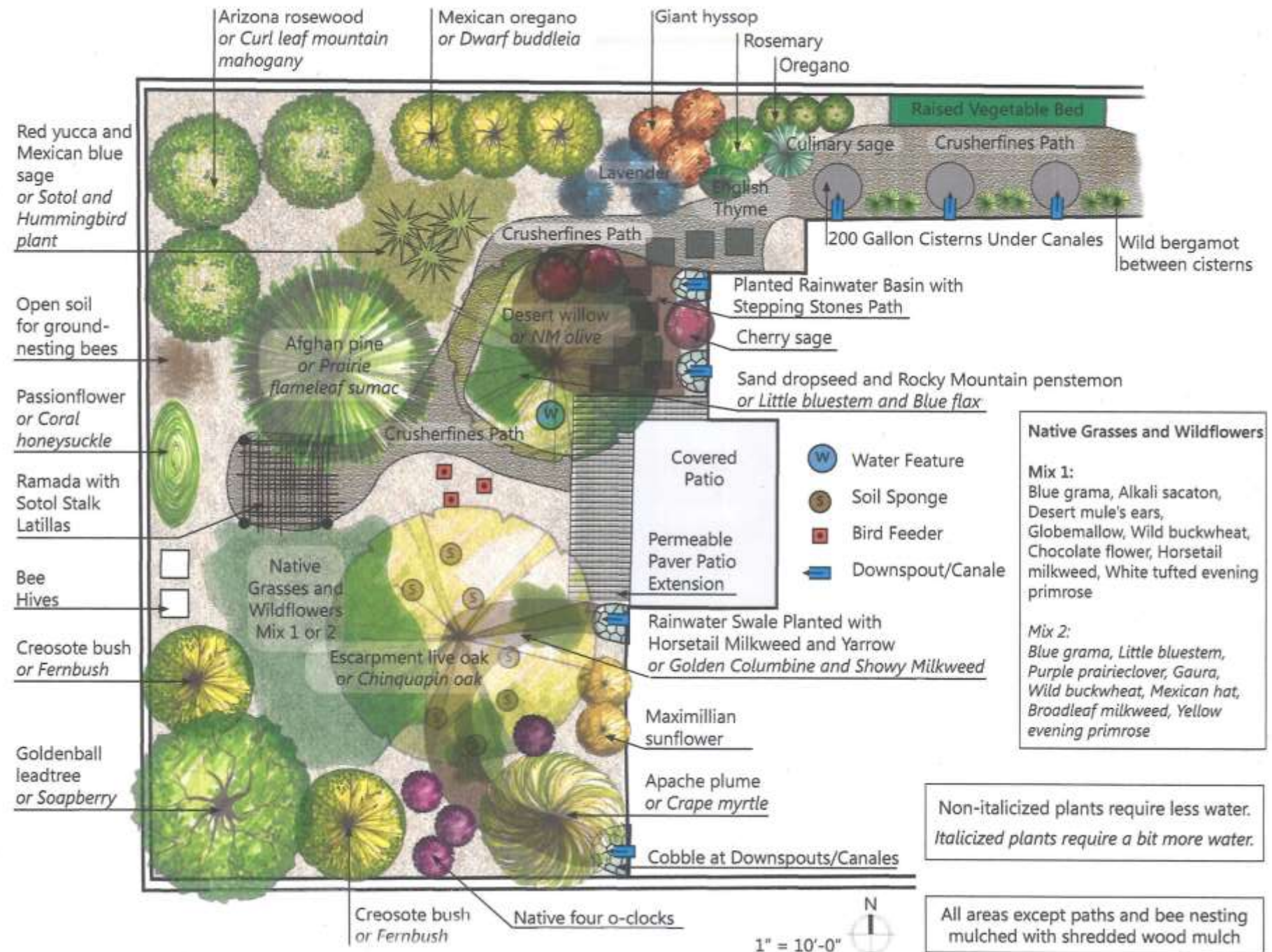




**A single small tree or large shrub
can be enough cover
Use fewer numbers of plants that
are already common in the
surrounding landscapes**

**Learn to be a partner
with nature rather
than trying to control
nature.**





Arizona rosewood
or *Curl leaf mountain mahogany*

Mexican oregano
or *Dwarf buddleia*

Giant hyssop

Rosemary

Oregano

Red yucca and Mexican blue sage
or *Sotol and Hummingbird plant*

Raised Vegetable Bed

Lavender

Culinary sage

Crusherfines Path

English Thyme

Open soil for ground-nesting bees

Crusherfines Path

200 Gallon Cisterns Under Canales

Wild bergamot between cisterns

Desert willow or *NM olive*

Planted Rainwater Basin with Stepping Stones Path

Cherry sage

Passionflower or *Coral honeysuckle*

Afghan pine or *Prairie flameleaf sumac*

Sand dropseed and Rocky Mountain penstemon or *Little bluestem and Blue flax*

Ramada with Sotol Stalk Latillas

Crusherfines Path

Covered Patio

Water Feature

Soil Sponge

Bird Feeder

Downspout/Canale

Bee Hives

Native Grasses and Wildflowers Mix 1 or 2

Permeable Paver Patio Extension

Native Grasses and Wildflowers

Mix 1:
Blue grama, Alkali sacaton, Desert mule's ears, Globemallow, Wild buckwheat, Chocolate flower, Horsetail milkweed, White tufted evening primrose

Mix 2:
Blue grama, Little bluestem, Purple prairieclover, Gaura, Wild buckwheat, Mexican hat, Broadleaf milkweed, Yellow evening primrose

Creosote bush or *Fernbush*

Escarpment live oak or *Chinquapin oak*

Rainwater Swale Planted with Horsetail Milkweed and Yarrow or *Golden Columbine and Showy Milkweed*

Maximillian sunflower

Non-italicized plants require less water. *Italicized plants require a bit more water.*

Goldenball leadtree or *Soapberry*

Apache plume or *Crape myrtle*

Cobble at Downspouts/Canales

All areas except paths and bee nesting mulched with shredded wood mulch

Creosote bush or *Fernbush*

Native four o'clocks

1" = 10'-0"



Build Your Backyard Refuge Day

Saturday, March 18 - 10am to 1pm



Learn how to grow your backyard refuge
with our fabulous partners.

We'll have talks and walks with landscaping,
rain water harvesting, & pollinator experts.

Valle de Oro National Wildlife Refuge
visitor center • 7851 2nd St SW



**ABQ Backyard
Refuge Program**



**FRIENDS OF
VALLE DE ORO**
NATIONAL WILDLIFE REFUGE





<https://www.npsnm.org/gardening-with-native-plants/>

<https://xerces.org/publications/plant-lists/pollinator-plants-albuquerque-and-santa-fe-region>

<https://friendsofvalledeoro.org/abq-backyard-refuge/>